

BOARD OF
County Road Commissioners
HOUGHTON COUNTY

PETE TOROLA, Chairman
Chassell Township
WILLIAM H. SILER, Vice Chairman
Torch Lake Township
GENE LONDO, Member
Calumet Township

20140 Gagnon Circle, M-26, Ripley
P.O. Box 269
Hancock, MI 49930
Office • 1-906-482-3600
Fax • 1-906-482-9600
Web • www.houghtoncountyroads.org

KEVIN P. HARJU, P.E.
County Highway Engineer
ROBERT P. TARVIS
Office Manager

October 30, 2024

BID NOTICE

HOUGHTON COUNTY BOARD OF ROAD COMMISSIONERS

Sealed bids will be received by the Houghton County Road Commission at their office at 20140 Gagnon Circle, Hancock, Michigan 49930 until 12:30 p.m. Eastern Standard Time on Tuesday, December 10, 2024.

1. 2007 Used Caterpillar 160M Grader

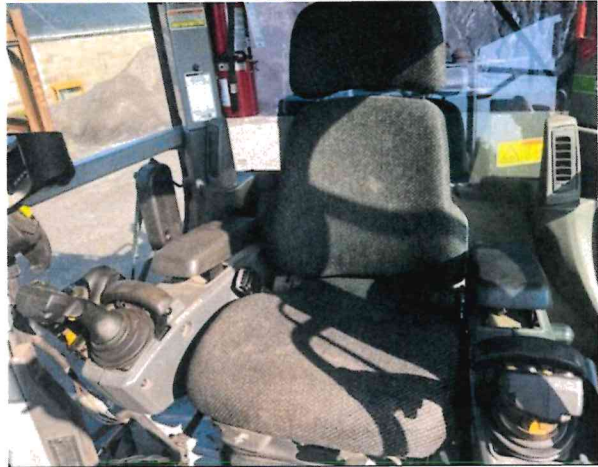
Bid document can be obtained by request from the Houghton County Road Commission, 20140 Gagnon Circle, P.O. Box 269, Hancock, Michigan 49930, (906)482-3600.

All proposals **INCLUDING ALL BID DOCUMENTS** should be submitted in a sealed, plainly marked envelope at the time and place stipulated above; and at which time will be publicly opened and read aloud.

The Houghton County Board of Road Commissioners reserves the right to reject any or all bids, to waive any irregularities in any bid, or to accept any bid or part of bid they deem most advantageous to the Houghton County Road Commission. An affirmative minority business enterprise opportunity purchaser. The Houghton County Board of Road Commissioners is a Tax-Exempt governmental unit number 38-2345220.

HOUGHTON COUNTY BOARD
OF ROAD COMMISSIONERS

Pete Torola, Chairman
William Siler, Vice Chairman
Gene Londo, Member



CAT CATERPILLAR
 CAT CATERPILLAR

MODEL NUMBER 160M

PRODUCT IDENTIFICATION NUMBER *CAT0160MCB9L00215*

	MODEL NUMBER	SERIAL NUMBER	ARRANGEMENT NUMBER
○	160M	2253519	
○		2521100892	253840

225-4150 3

CATERPILLAR INC
 PEORIA, IL 61629
 USA
 Made in PARTS ORDER
 USA 230-6280

CAT SER NO THX10802 ENGINE MODEL C9
 CERT. NO. ENGINE SALES MODEL
 MODIFICATION NO. MAX 3048 M
 ALT 10000 FT
 A7 NO 225-5619 ELECTRONICS GP
 CORE AR ECM SOFTWARE 300-9470
 CEM NO PERF SPEC 0K-4694
 FLS (INTERCEPT) 78 FTS (SLOPE) 63
 ADV 268 HP 200 kW MAX HP kW
 USE SERVICE TOOL TO VERIFY CURRENT ENGINE SETTINGS

